

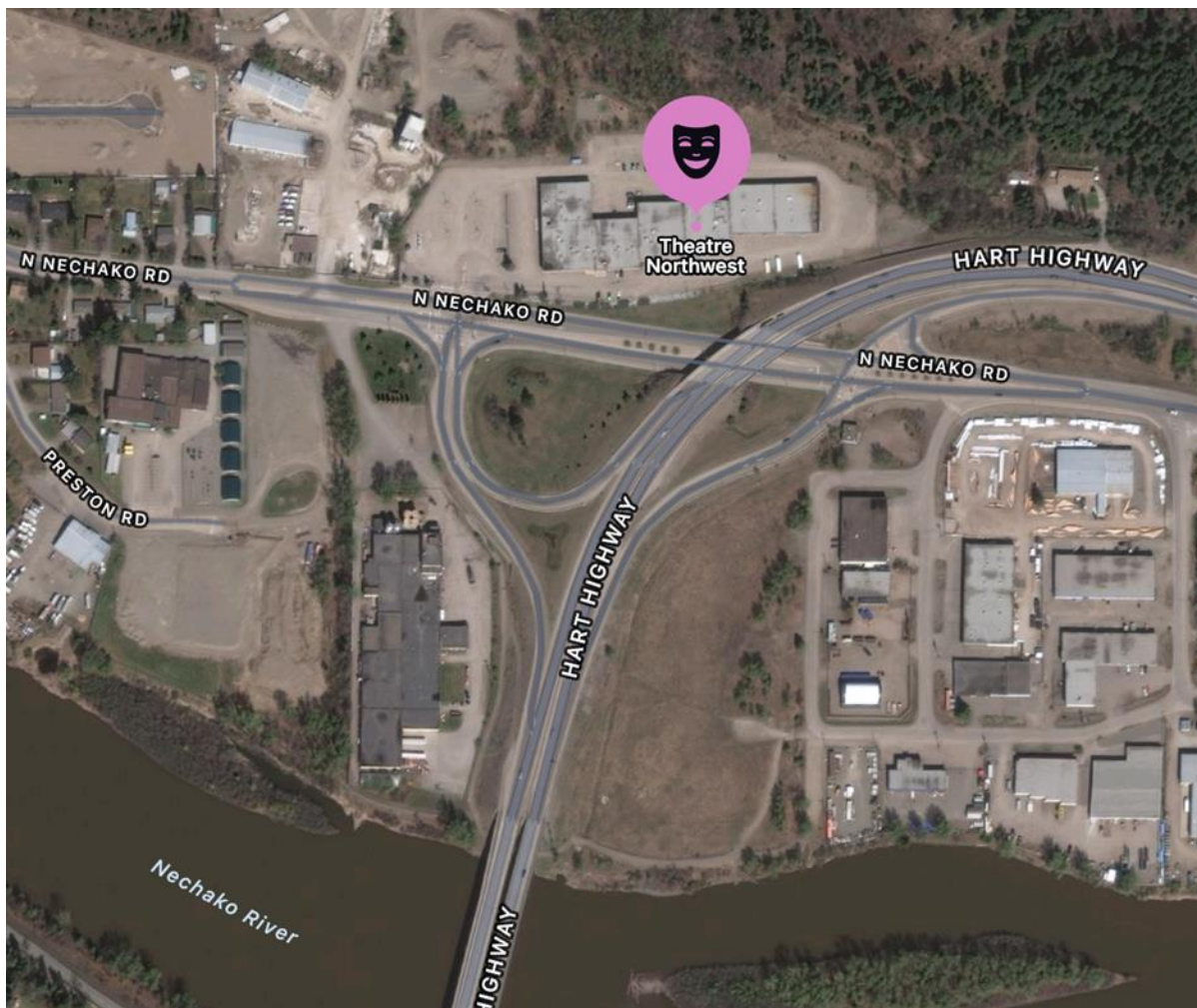


Summer Sewing Camps

Visual Guide

This guide contains general information about the sewing camps taking place at Theatre NorthWest during the summer of 2022, which might be helpful for new students.

Location



Sewing camps take place in the lobby of Theatre NorthWest. The address is:

556 North Nechako Road

Unit #36

The Building & Parking Lot

Here are some pictures of Theatre NorthWest and its surrounding parking spaces.

This is what the theatre looks like from North Nechako Road.



This picture shows the parking lot in front of Theatre NorthWest.



You can park in any space around the theatre. There is lots of parking available and people usually have no trouble finding a spot for sewing camp drop-off and pick-up.

The **accessible parking space** is on the corner of the building and indicated by a yellow wheelchair symbol painted on the ground. The adjacent ramp gives access to the sidewalk and a door to the theatre.

Note: there is **no button** to activate this door. A theatre staff member will open and hold it for you, if needed.



Main Entrance

This picture shows the main entrance door, on the left.



Sign-in/out forms will be posted on the outside of the windows beside the main door. There will be pens on the ledge below the window.

Important Notes About Drop-off/Pick-up

Morning classes: **9:00am – noon**

Afternoon classes: **1:30pm – 4:30pm**

The doors will open 5 minutes before class begins. Please do not arrive much earlier than this, as you will not be able to enter the theatre.

Students attending a morning and afternoon class **must be picked-up in between.**

Important Notes About Sign-in/Out

Every student needs to be signed-in and out of every class.

Minors must be signed-for by an adult. However, in special circumstances, some minors may sign for themselves. Permission to do that must be communicated by the parent/guardian of the student to the teachers, in advance. **Adult** students sign for themselves.

When Signing-in

- Confirm that the student is not displaying signs of a contagious illness
- List who will be picking up the student and at what time
- Verbally communicate with one of the teachers about any special plans relating to your student's pick-up (ex. needing to leave early)

When Signing-out

- Please wait outside or in the part of the lobby opposite the sewing camp space, to minimize distraction of the class

Lobby and Sewing Camp Space

Here are some pictures of the lobby and the sewing camp space. The exact set-up of tables, chairs and sewing machines may vary, though, as class needs evolve.

In these pictures, there are no people in the space.

However, there will be **3 teachers** and **up to 15 students**, here, during a sewing class.



This is what you will see as you first enter the building. This is where parents/guardians may wait at pick-up time.

This is the **sewing camp space**, which will be at the far end of the lobby.



Each student will have **their own sewing station**.

- Depending on the size of the class, there may be up to two students per large desk.
- Students can choose to sit with siblings or friends if they like.

There will be a table for the teacher at the front of the class (not shown in the pictures).

The floorspace in the centre of the desks will be used as a fabric cutting area.



This space can become **quite loud** during class. The sewing machines make a loud noise, and some younger students can become rambunctious (like in an elementary school classroom). Teachers will be wearing **noise-dampening earplugs** and students are welcome to do the same. Students may bring their own or take some from the supply at the theatre.





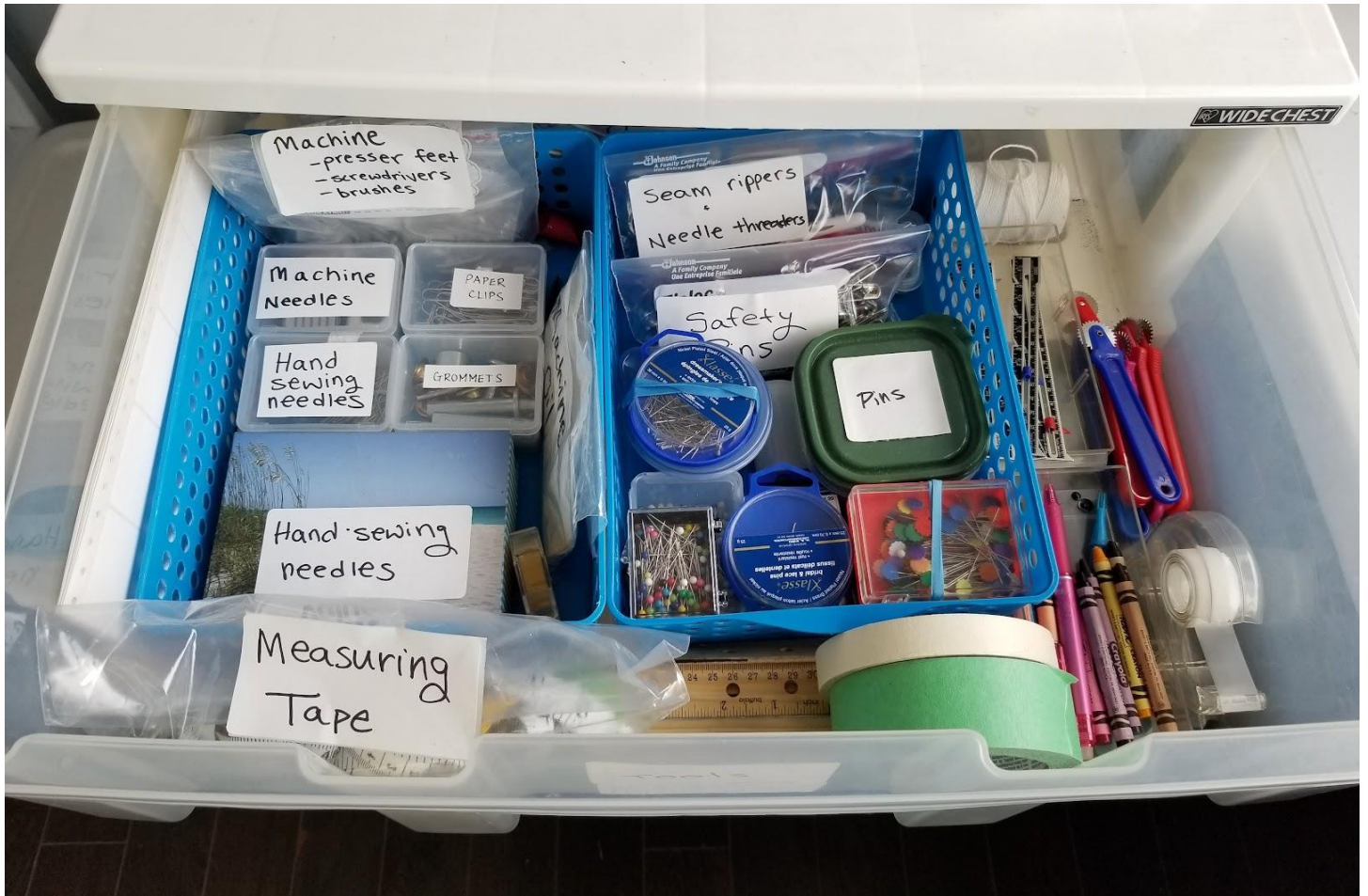
Here are some pictures of our **supplies** and **fabric selection**.















These are our two **ironing stations**.



These are the **sewing machine** models that we have at the theatre. Teachers will fully explain how each model works. Students will use **the same machine** throughout the week.

Note: students are welcome to **bring their own machine** from home. It can be kept securely at the theatre for their personal use throughout the week.





Pictures of Past Classes

Here are some pictures of classes that took place in the past. The desks were arranged differently than how they will be, this year.











Snack Break

There will be a 20-minute snack break during each sewing class. Students will be offered a **juice box** and pre-packaged **granola bar**. They will also be welcome to eat snacks brought from home.



Bathrooms

There are three sets of bathrooms at Theatre NorthWest. The students may use whichever one they prefer.

1. Women

This washroom has the largest capacity and is connected directly to the sewing camp space, which makes it the most convenient. Also, even though it's labelled "women," people of all genders are welcome to use it. Most students, regardless of gender identity, use this washroom.



The washroom is at the end of this short hallway.



This bathroom has:

- 5 private stalls (none are wheelchair-accessible)
- 2 sinks
- 2 paper towel dispensers
- Menstrual products



There is *no* loud fan or electric hand dryer. It's much quieter than the other two sets of bathrooms.

The other bathrooms are between the lobby and the performance space.



2.Men



This bathroom has:

- 1 private stall
- 1 urinal
- 1 sink
- 1 paper towel dispenser
- Menstrual products

When the lights are on, there is a **loud fan** which turns on, as well.

3. All-genders/Accessible

This washroom is large and private. There are no stalls.



This bathroom has:

- 1 toilet
- 1 sink
- 1 paper towel dispenser
- Menstrual products

When the lights are on, there is a **loud fan** which turns on, as well.