



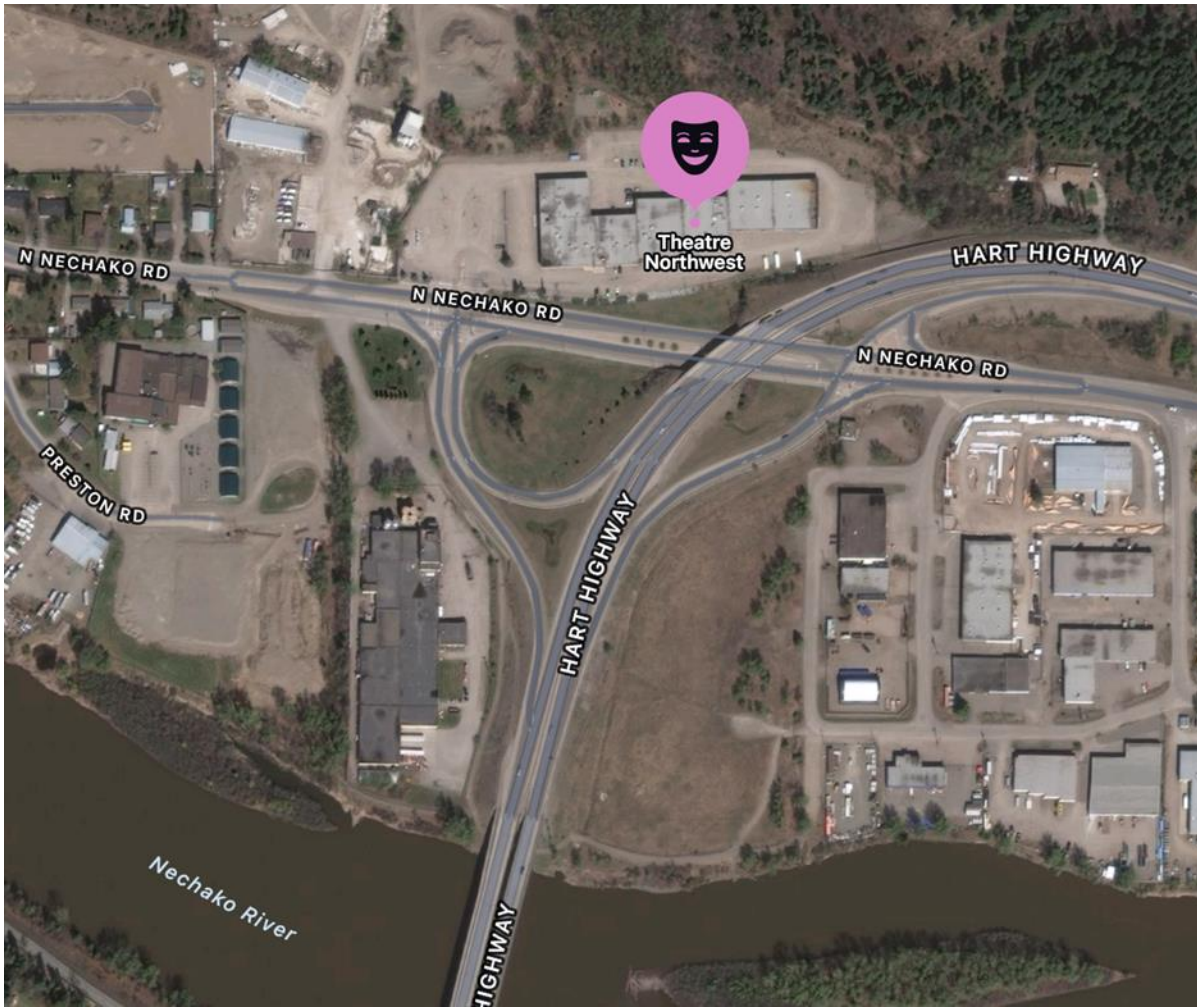
Visual Guide:

Theatre NorthWest's

Physical Space

This guide contains general information about Theatre NorthWest's physical space, which might be helpful for first-time visitors.

Location



Theatre NorthWest is located within a plaza near the intersection of North Nechako Road and Highway 97. The address is:

556 North Nechako Road

Unit #36

Prince George, BC

Office Hours & Contact Information

Mondays – 9am to 2pm

Or by appointment

Closed on statutory holidays

To make an appointment or ask questions, please email
admin@theatrenorthwest.com

Or

Phone **(250) – 563 – 6969**

Parking

Here are some pictures of Theatre NorthWest and its surrounding parking spaces.

This is what the theatre looks like from North Nechako Road.



This is the parking lot in front of Theatre NorthWest.



You can park in any space around the theatre and its neighboring businesses. There is lots of parking available and people usually have no trouble finding a spot.

The **accessible parking space** is on the corner of the building and on the right side of the unit. It's indicated by a yellow wheelchair symbol painted on the ground.



There is a **short, shallow ramp** leading from the accessible parking space to the sidewalk and to a door to the theatre. The ramp is painted with yellow stripes.

This is the **only** ramp or curb cut onto the sidewalk near the theatre.



This door **opens outwards** onto the sidewalk. There is **no button** to activate it. It is **locked during the day**, as it is not the main entrance. During performances, it is unlocked, and a staff member will be ready to hold it open for you.

Main Entrance

The main entrance door is on the **left** of our unit. It **opens outwards** onto the sidewalk. There is **no button** to activate it. It is unlocked during office hours and during events.



There is a **new ramp** on the sidewalk that leads to this door. Currently, it is **not painted**. There is **no curb cut** at this entrance.



Lobby

Depending on the event and time of day, the lobby may be empty or extremely crowded. The set-up of tables, chairs and other items will vary. Sometimes, it's very noisy and other times it's very quiet. In the evenings, the lobby is very dimly lit.

This is what you will see as you first enter the building from the main entrance:

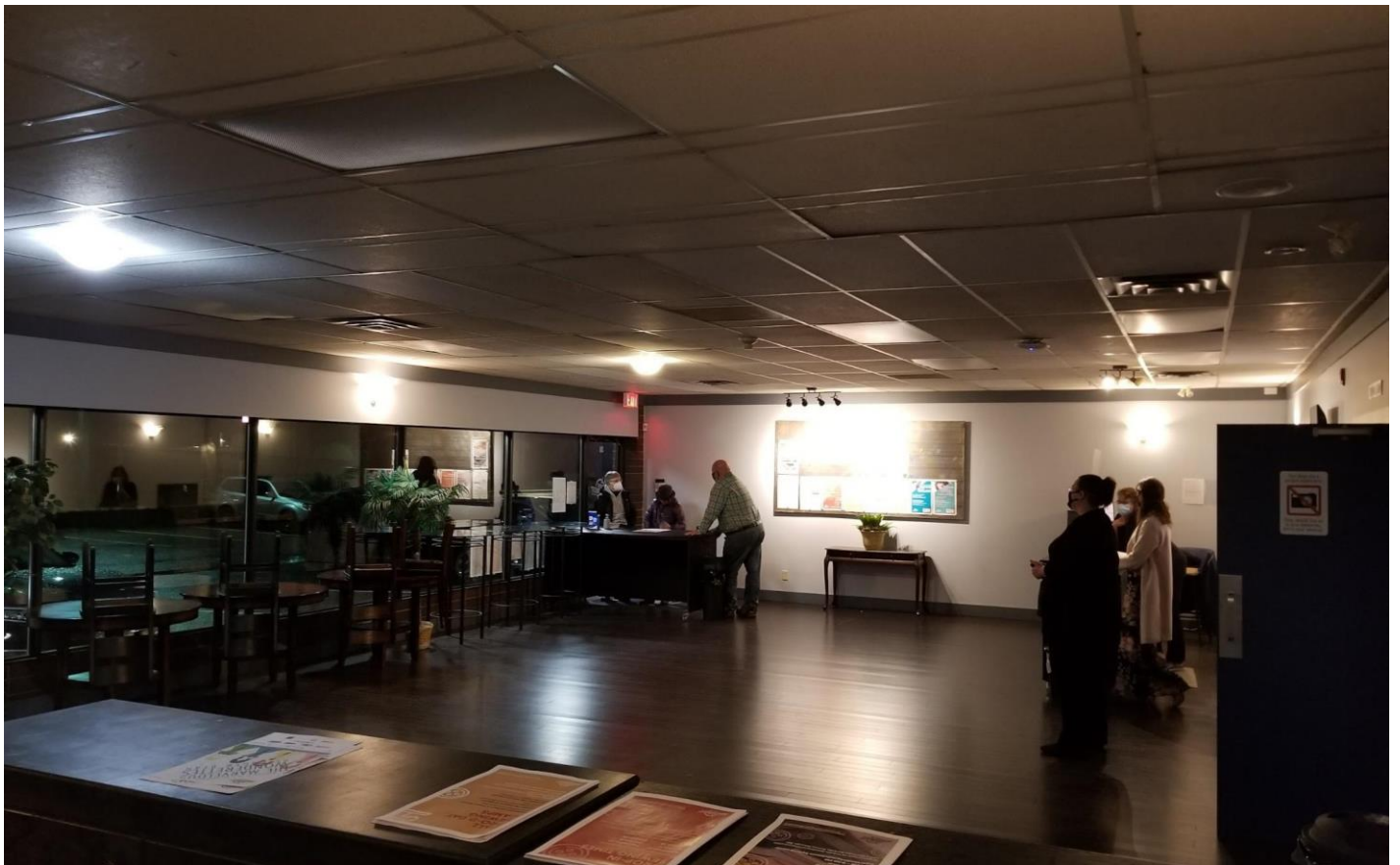


This is the **box office/front desk**. Here, you can purchase tickets and subscriptions, request hearing assisting devices, sensory items, fidget toys and blankets, and ask questions.



Here are some pictures of the lobby taken on various occasions and from different angles.







Bathrooms

There are **three sets** of bathrooms at Theatre NorthWest. People may use whichever one they prefer.

1. Women's

This washroom has the largest capacity. It is located at the end of this short hallway which leads away from the lobby.





This bathroom has:

- 5 private stalls (**none** are wheelchair-accessible)
- 2 sinks
- 2 manual paper towel dispensers
- Menstrual products

There is **no fan** or electric hand dryer. It's a **quiet** bathroom.



The other two sets of bathrooms are found within the small chamber between the lobby and the auditorium/house.



2. Men's

This bathroom is on the left. It has:

- 1 private stall with a toilet (**not** wheelchair-accessible)
- 1 urinal that's not within a private stall
- 1 sink
- 1 manual paper towel dispenser
- Menstrual products

This is a **loud** bathroom. There is a **loud fan** which comes on with the lights. There is no electric hand dryer.



3. Accessible/All-Genders'

This washroom is on the right. It's **large, private** and **wheelchair-accessible**. It has:

- 1 toilet
- Handrails (one on the wall beside the toilet, the other on the wall above the toilet)
- 1 sink
- 1 manual paper towel dispenser
- Menstrual products

There is **no fan** or electric hand dryer.
It's a **quiet** bathroom.

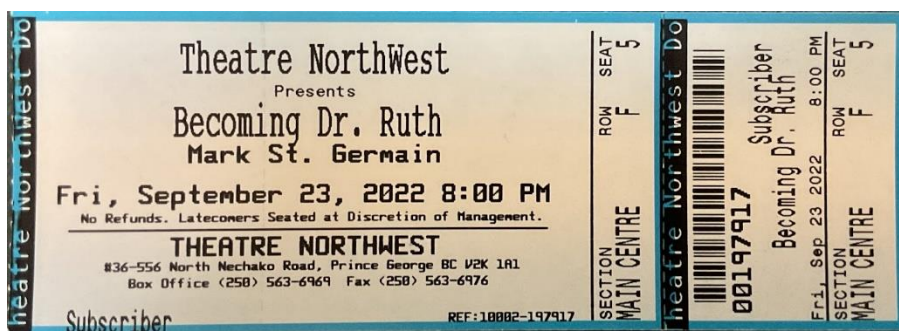


Auditorium/House

This consists of the **stage** and seating for the **audience**. The entrance is shown, below. As you enter, the stage will be on your left and the seats on your right.



You will be asked to show your ticket before entering. You



may have a **ticket stub** or **electronic ticket** received through email. Both are acceptable.

Seating

You choose your seat when you buy your ticket. There is a **lower/main level** and a **balcony**. All seats have a great view. Before the show, if you need assistance finding your seat, a volunteer will show you where it is.

Lower/Main Level

There are **two sets of stairs** for accessing the higher rows of seats. The closest one to the entrance leads all the way up to the balcony. The furthest one only leads to the top of the lower/main section.



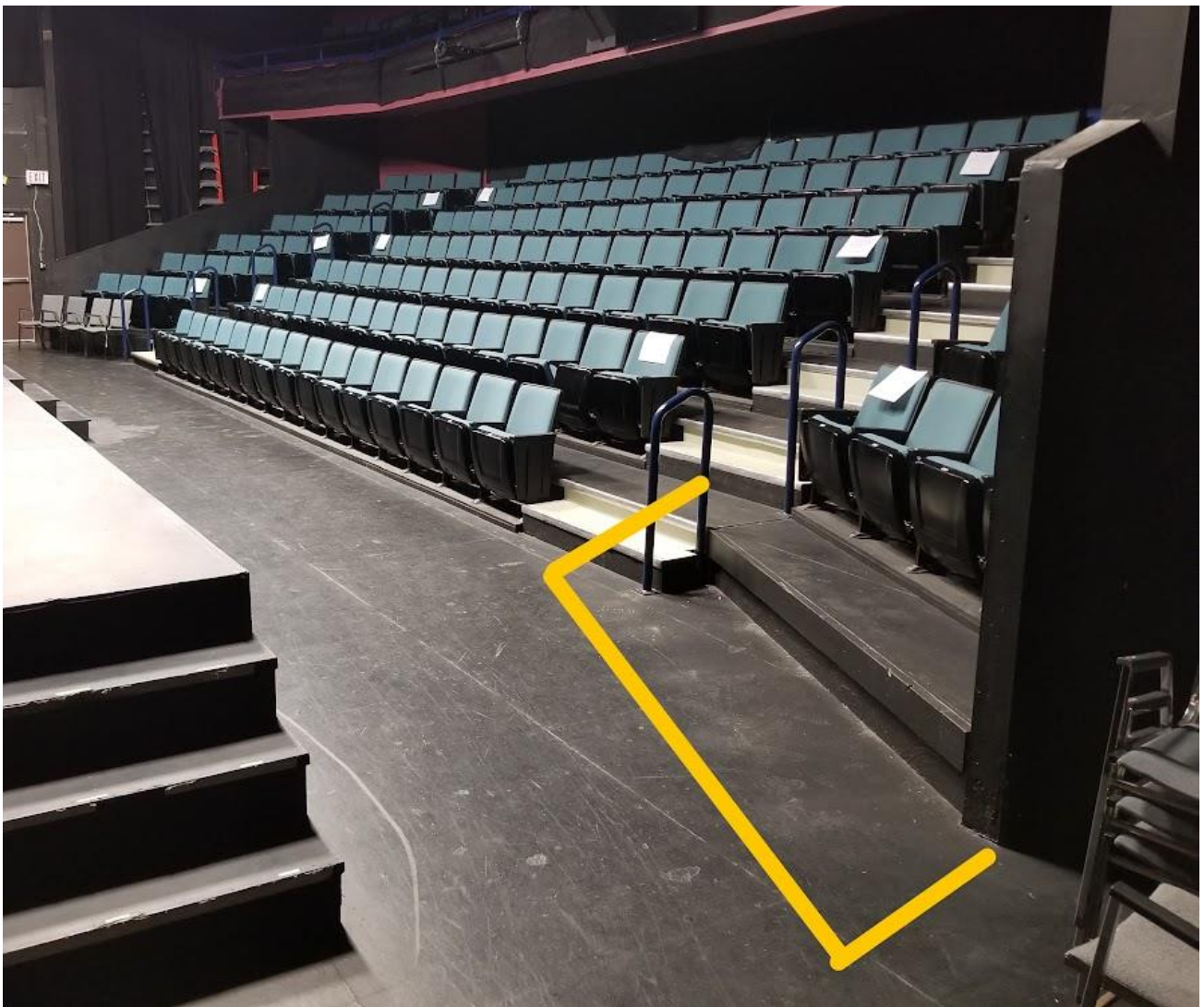
The stairs alternate between one **narrow, white step** and one **wide, black step**. The wide steps are on the levels containing the rows of seats.

There are **handrails** along the **outer edges** of each set of stairs, *not* the inner edges. The rails are not continuous and **have breaks** where people can enter each row of seats.

**** pic of stairs, handrails**

The right and leftmost sections of the front row are reserved as **accessible seating**. This space can accommodate wheelchairs and other large mobility aides. The chairs in these areas are not fixed to the floor and can be moved or removed to accommodate various needs.

If you require seating in this area, please **select an accessible seat when you buy your ticket**. A staff member or volunteer will ensure the space is open for you before the performance.





Balcony

The balcony is located above the lower/main level and is accessible **by stairs, only**.



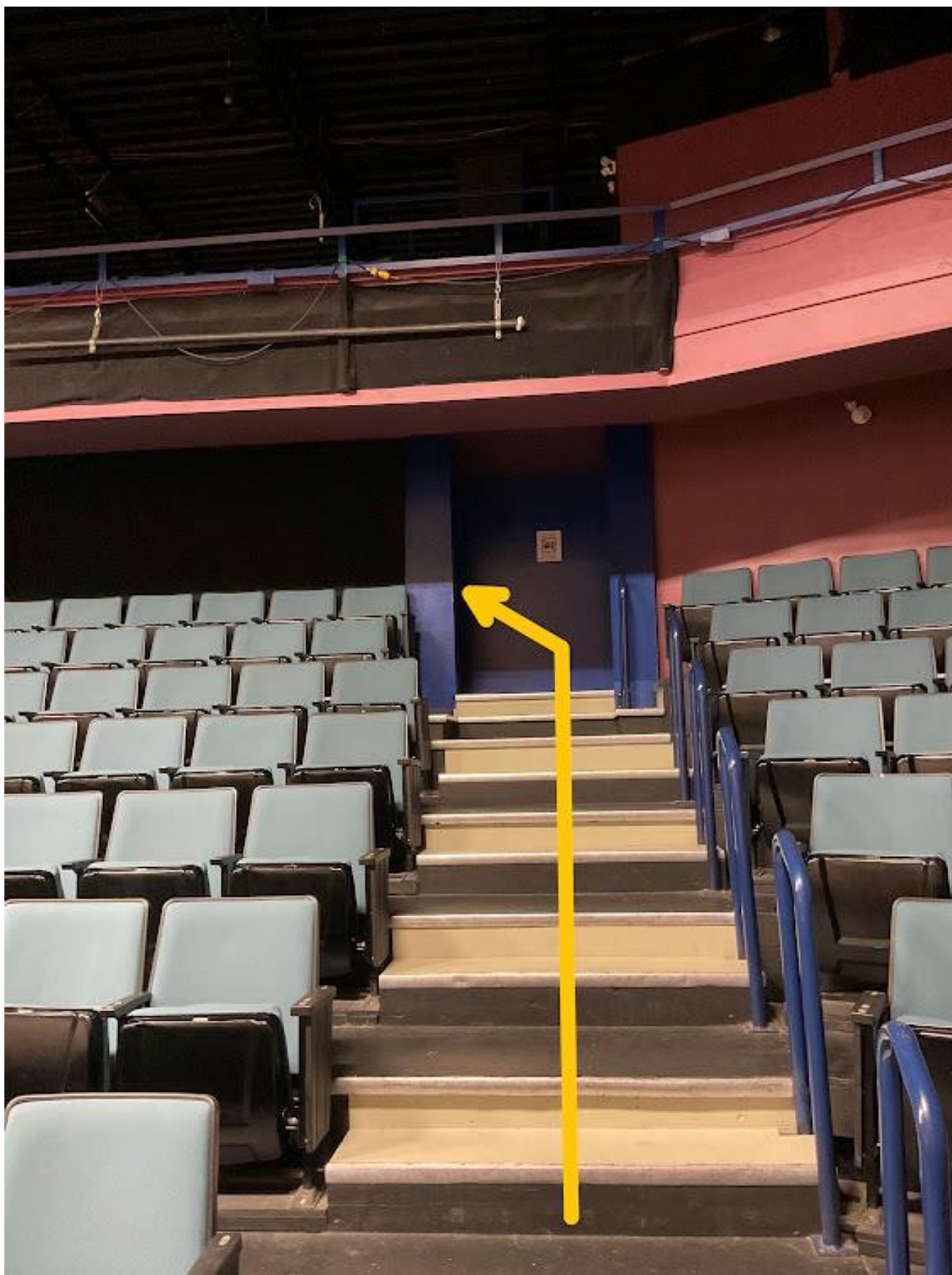
There are two rows of seats in this section.



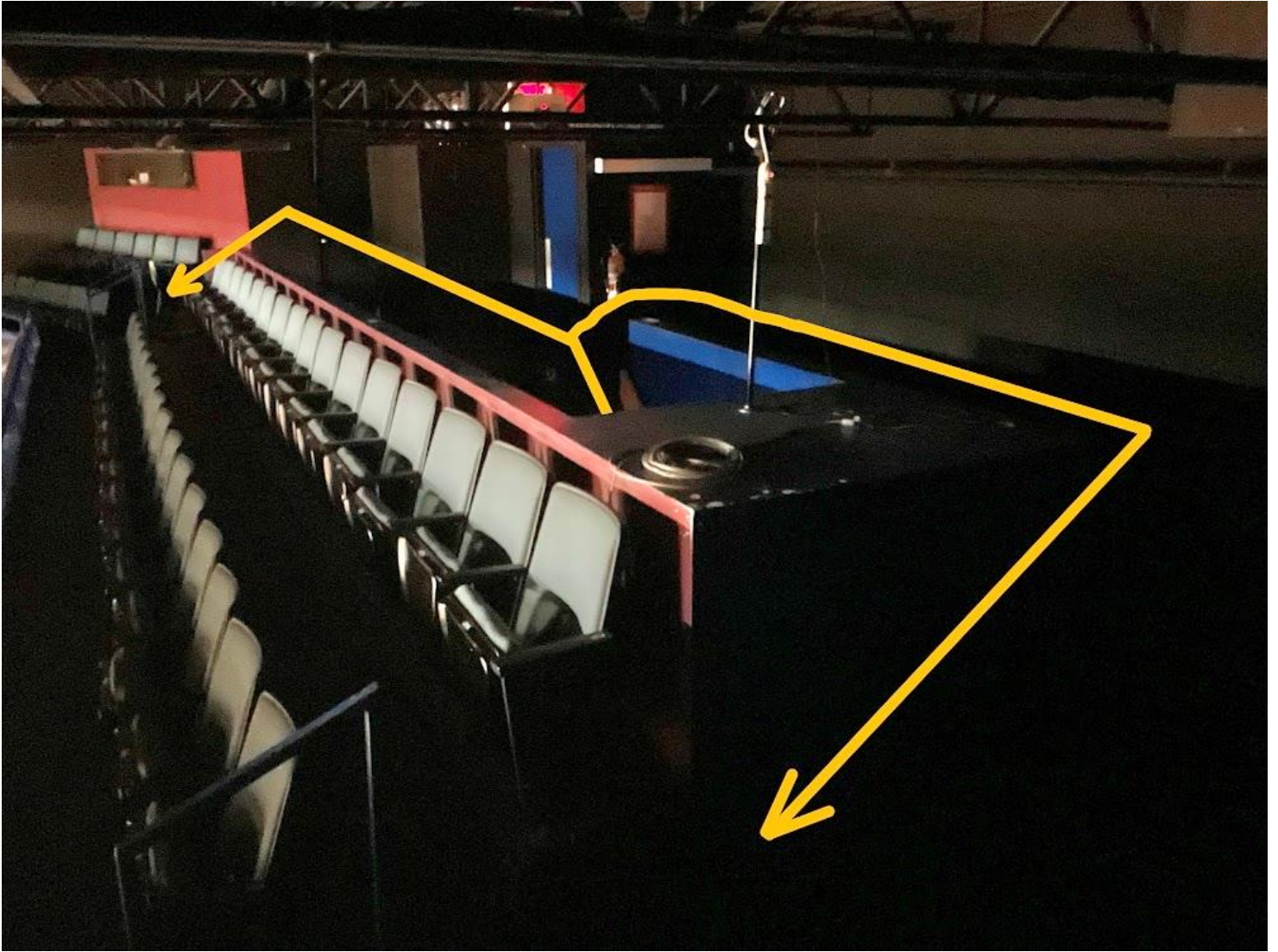
The balcony is **very dark** and there are many **tripping, falling** and **overhead hazards**. It is **not accessible** for those with low or no vision, vertigo, fear of heights, reduced mobility or who are unsteady on their feet. The darkness and uneven floor can cause serious anxiety.

The railing along the front edge is 92cm high in front of both sets of stairs and only 76cm high everywhere else. You feel **very high-up and exposed** when walking along the front row.

The following photos will outline the route to the balcony:







The Stage

Each production will have a unique set and lighting. Here are some examples from various shows:



*The
Marvelous
Wonderettes,
2021*



Glory, 2022



*Mom's The
Word, 2022*



*Becoming Dr.
Ruth, 2022*

Sensory/Fidget Items

Theatre NorthWest has a supply of sensory/fidget items available for **anyone** to borrow when they're at the theatre. Items can be **requested at the front desk**. After a performance, all borrowed items **must be returned**. Items are cleaned between uses.

What we have includes:

- Ear defenders
- Earplugs
- Hearing assisting devices
- Blankets
- Stress balls
- Silicone popping toys
- Large pom-poms
- Pipe cleaners
- Plastic link "snakes"
- Sensory bottles
- Slinkies

Our supply is limited and items are lent on a **first-come-first-served** basis. Patrons who know they'll need fidget items during a show are encouraged to **bring their own**.

[illegible]

Hearing Assisting Devices

Our facility is equipped with a hearing assisting system that uses an FM signal. This is for people who need a **louder volume** to fully appreciate a performance.



A small, **electronic receiver** picks up the sound coming from the stage and plays it through **headphones**. The user can **increase the volume** as needed by turning a dial on the top of the receiver.

The hearing assisting devices we have come with adjustable, lightweight, over-the-ear headphones. However, they will work with **any headphones** that have a **3.5mm headphone jack**. So, people who need these devices can bring and use their preferred style of headphones.

Anyone can request one of these devices at the front desk!

This is what the receiver and headphones we provide look like.

