

Visual Guide to:

Our Venue

This guide contains information about Theatre NorthWest's physical space. We update it periodically to reflect major changes.



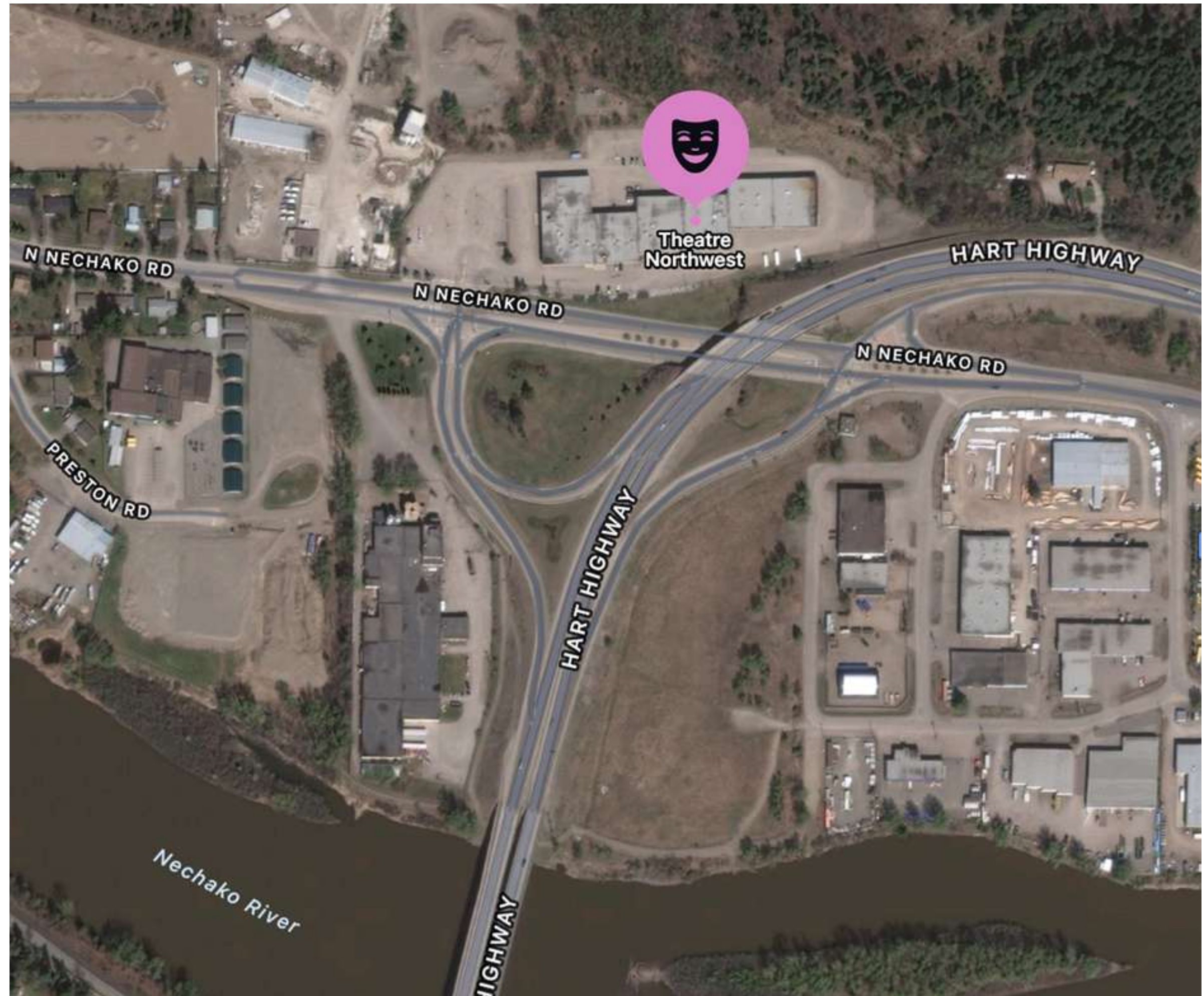
Location

Theatre NorthWest is located within a plaza near the intersection of North Nechako Road and Highway 97.

Our address is:

Unit #36

**556 North Nechako Road
Prince George, BC**



This is what Theatre NorthWest looks like from North Nechako Road.



Parking

This is the parking lot in front of Theatre NorthWest. You can park in any space around the theatre and its neighboring businesses.

There is lots of parking available and people usually have no trouble finding a spot.



Accessible Parking Space

There is 1 accessible parking space at the corner of our unit. It's indicated by a blue and yellow wheelchair symbol painted on the ground.

HandyDART buses usually park at an angle over this spot.

There is a **ramp** leading from this parking space to the sidewalk. It's painted with yellow stripes. This ramp is the only wheelchair-accessible point along the sidewalk in front of Theatre NorthWest. Please note that **the yellow stripes on the ramp are slippery in the winter!**



Entrance Doors

This is what the theatre looks like from the parking lot.

There are 2 entrance doors.



1. Main Entrance

The first door is our main entrance. It's on the **left** of our unit.

This door is **not wheelchair-accessible**. It opens outwards onto the sidewalk. There is no button to activate it. Although a ramp is built into the sidewalk in front of this door, the bottom is not flush with the parking lot. There is a 1.5 inch-high lip that is not wheelchair-accessible.





Here is a closer look at our main entrance.

2. Wheelchair-accessible Entrance

The second door is our wheelchair-accessible entrance. It's on the **right corner** of our unit, next to the wheelchair-accessible parking space.

This door opens **outwards** onto the sidewalk. While there is **no button** to activate it, **a staff member or volunteer will be available to hold it open for you.**



Lobby

This is what you will see when you enter the building from the main entrance.

Please note that the exact arrangement of furniture in the lobby will vary depending on the event.



The lobby can be **empty** or **extremely crowded**. It's usually the most crowded right before a performance begins, during intermission, and right after a performance ends.

When the lobby is crowded, or if there's a sewing class happening, **it can be very loud**.

In the evenings, the lobby is **very dimly lit**.

The next few pictures show the lobby on different occasions and from different angles.



This was taken during box office hours on a Monday afternoon.



This was taken as patrons were arriving before an evening performance.



These pictures were taken during summer sewing classes.



Box Office

This is the box office. It will be directly in front of you when you enter through the main door.

At the box office, you can:

- purchase tickets and subscriptions
- request hearing loop receivers
- borrow sensory items and blankets
- ask questions



Our hearing loop system was made possible by generous funding from the Prince George Community Foundation



The box office has a hearing loop!

If you need hearing assistance, box office staff will position a portable hearing loop device on the counter between you. It's shown in the picture to the right.

Next, you will need to connect to the hearing loop. You can either **turn on the T-coil in your personal hearing aid** or ask to borrow one of our **portable hearing loop receivers**.

Then, you will be able to hear the conversation more clearly!



Click [here](#) to learn more!

Concession

There is usually a concession stand in the lobby during events.

You can purchase coffee, tea, water, fizzy drinks, chips and cookies.

Cash, debit and credit cards are accepted.

There is usually a long line during intermissions.



Bar

There is usually a bar stand in the lobby during events. It will be next to the main entrance door.

Patrons who are 19 years and over can purchase beer, wine or spirits.

Cash, debit and credit cards are accepted.

There is usually a short line during intermissions.



Bathrooms

There are 3 sets of bathrooms at Theatre NorthWest. People may use whichever one they prefer.

From the lobby, you can find each one by following the paths indicated on the picture to the right.



Here is a closer look at how to get to the men's and accessible/all genders' washrooms.





Women's Washroom

This bathroom is **not** wheelchair-accessible.

This bathroom is **quiet**. There is no fan.

This bathroom includes:

- 5 private stalls
- 2 sinks
- 2 manual paper towel dispensers
- Free menstrual products







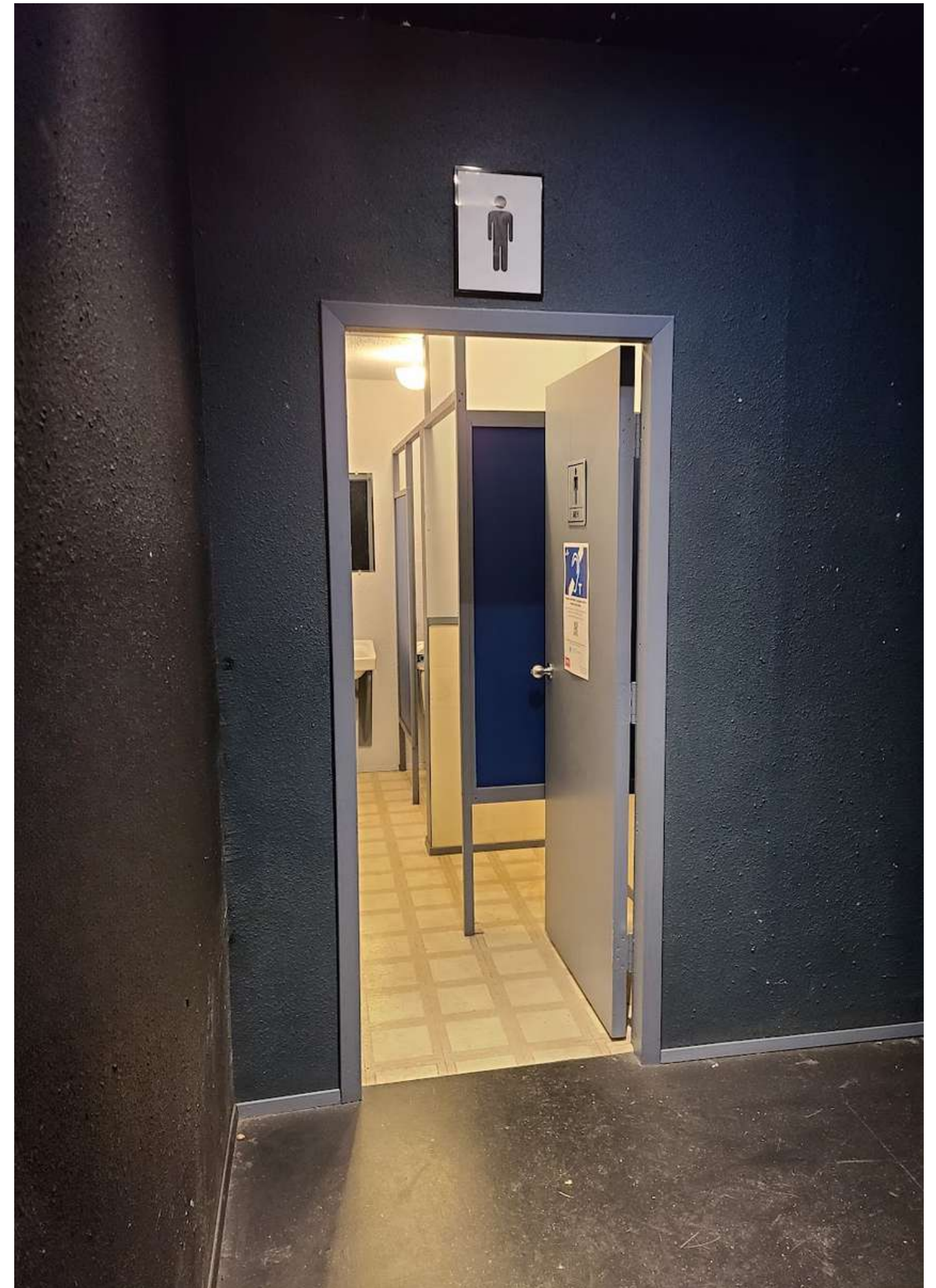
Men's Washroom

This bathroom is **not** wheelchair-accessible.

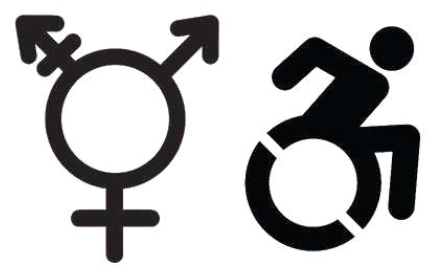
This bathroom is **loud**. A fan automatically turns on with the lights.

This bathroom includes:

- 1 private stall with a toilet
- 1 exposed urinal
- 1 sink
- 1 manual paper towel dispenser







Accessible & All Genders' Washroom

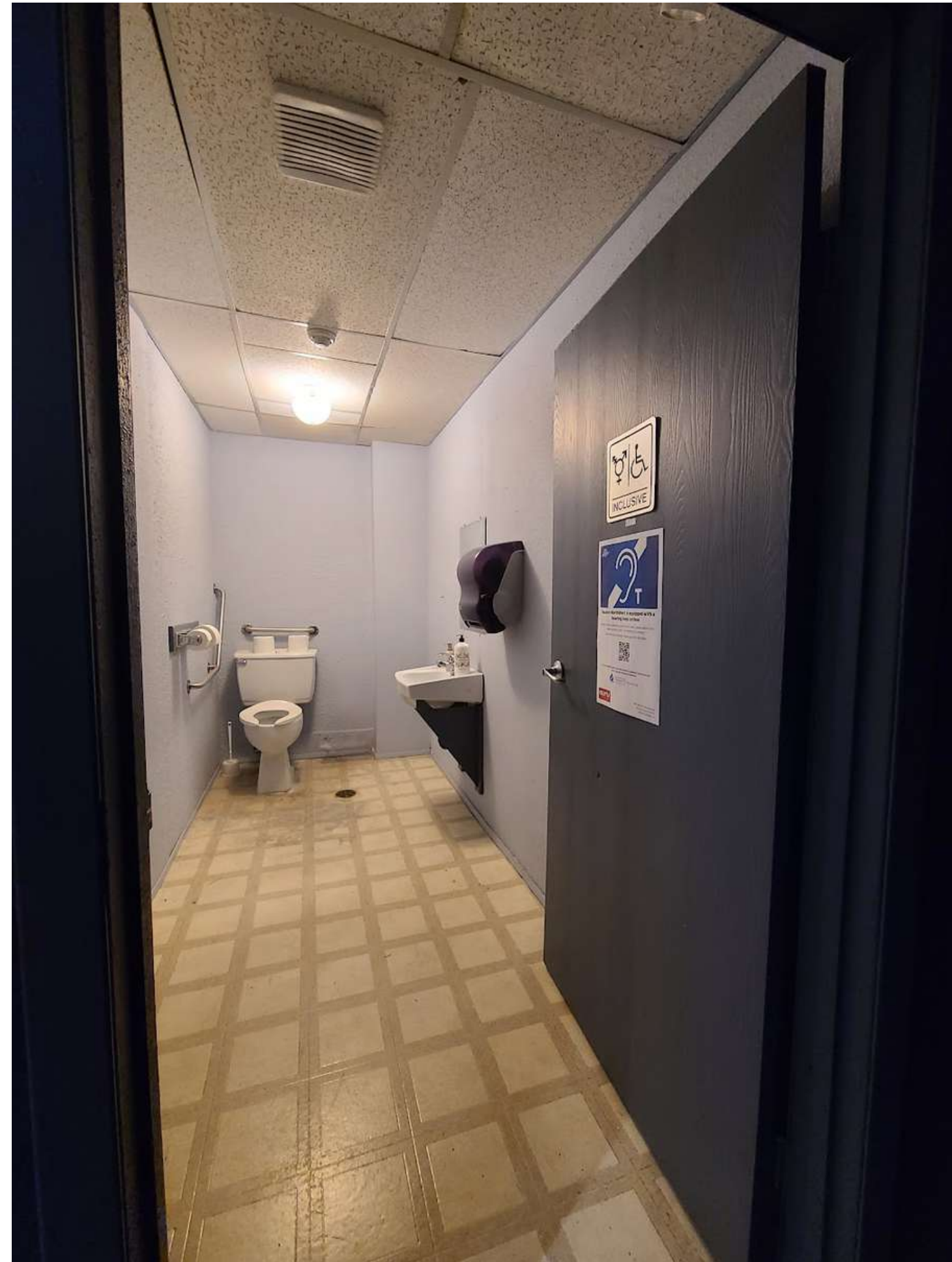
This bathroom is large and **wheelchair-accessible**.

This bathroom is **quiet**. There is no fan.

This bathroom is single-occupancy. There is:

- 1 toilet
- handrails beside and above the toilet
- 1 sink
- 1 manual paper towel dispenser
- Free menstrual products





Performance Space

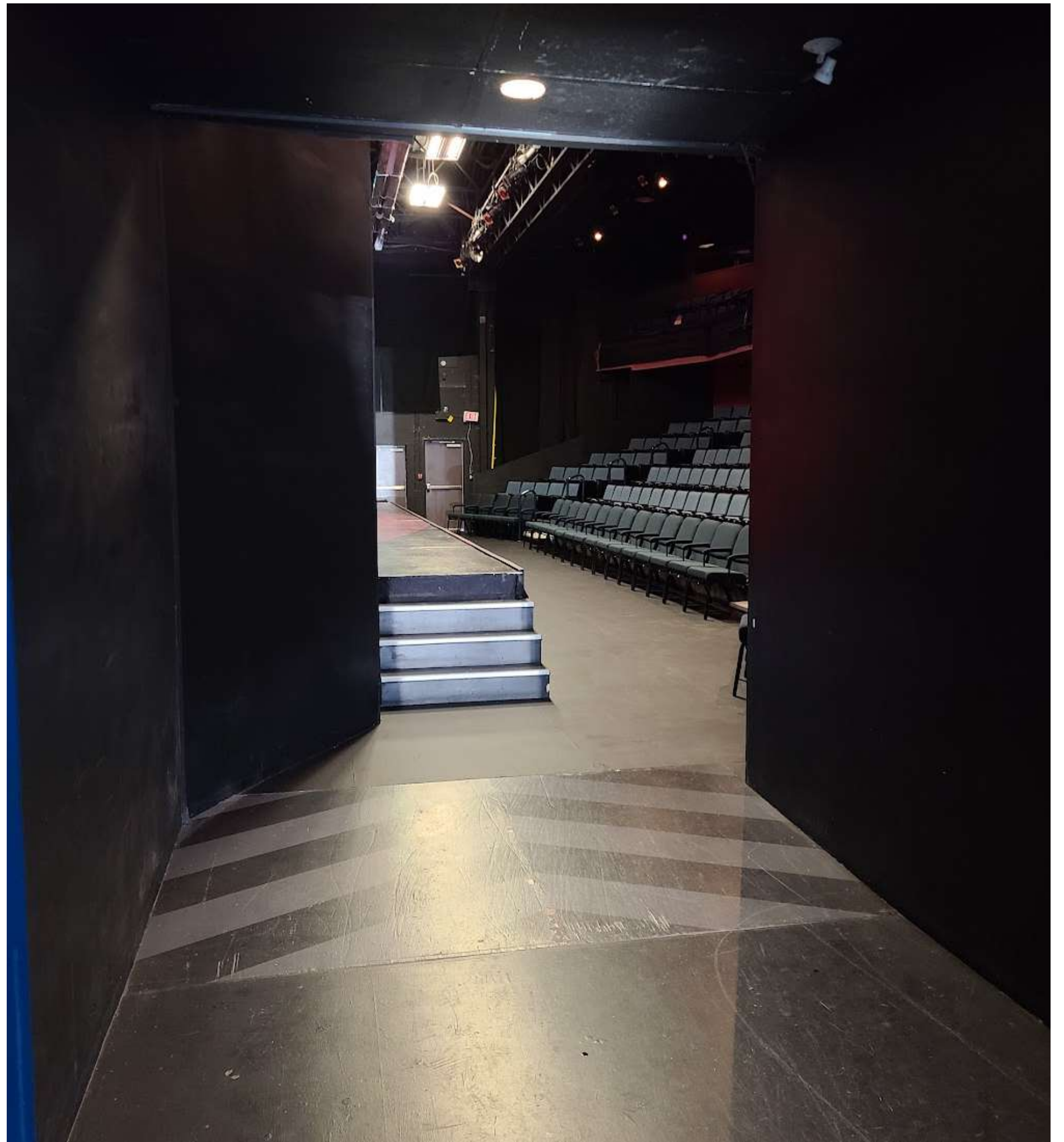
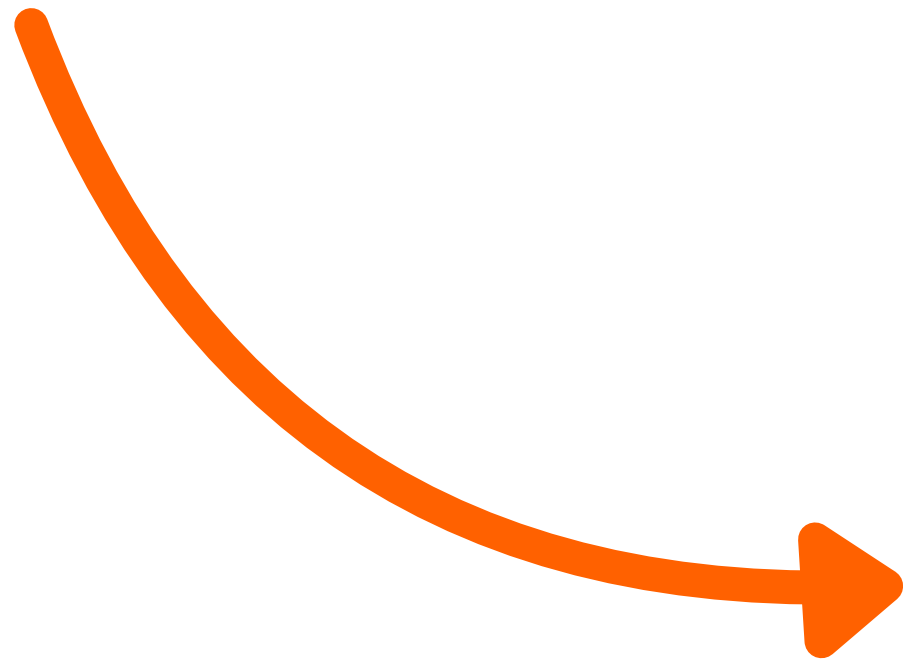
The performance space includes the stage and seats for the audience. To get there from the lobby, you will go through these blue doors.

The stage will be on your left, and the seats on your right.

Please note that part of the floor is **slightly angled**. The angled portion is painted with **grey chevrons**.



Here's a closer look at
the angled floor section.



Seating

This is what you will see when you enter the performance space. There is a lower level and a balcony. The lower level includes wheelchair-accessible seating along the front row.

Balcony

**Main/lower
section**





Wheelchair-accessible Seating

We recently purchased new, free-standing chairs for our front row. These chairs allow us to create **wheelchair-accessible spaces *anywhere* along the front row**, since we can remove and reposition them easily.

If you require a wheelchair-accessible seat, **purchase a ticket for any seat in the front row**. When you arrive for the show, we will create a space for you in the position corresponding to your seat number.

This project was made possible by generous
funding from IREN and BC Gaming



Main/Lower Section

This section includes rows A to G.



Row G is the farthest row from the stage in this section. Patrons must climb 11 steps to access this row.

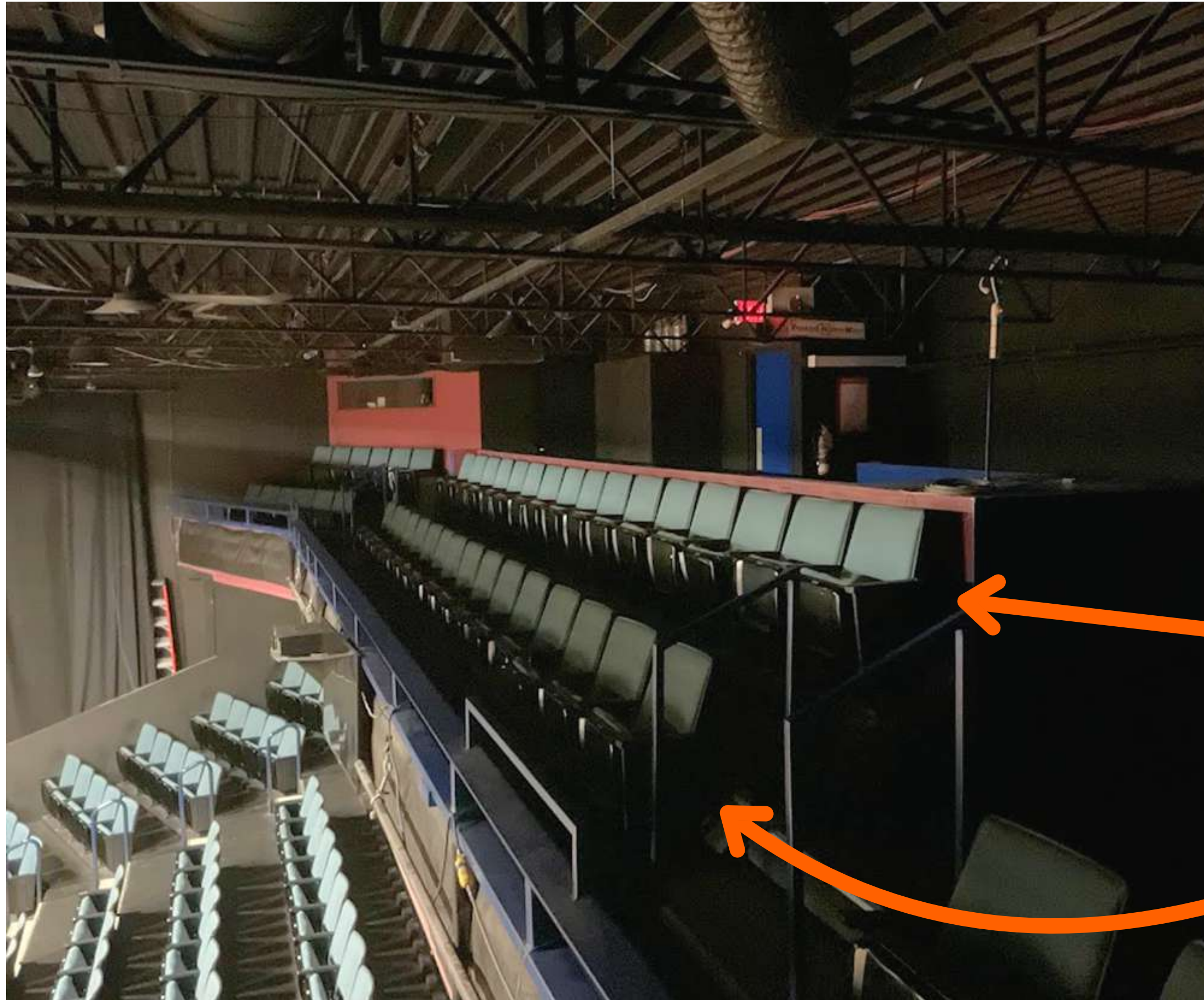
Row A is closest to the stage and can be accessed without climbing any stairs. Row A is the **wheelchair-accessible** row.

Balcony

The balcony is upstairs.
Patrons must climb 24 steps to get there. We do not have an elevator.

Please note that the balcony is **very dark**. There are many **tripping, falling, and overhead hazards**. It is not accessible for those with low or no vision, vertigo, fear of heights, reduced mobility, or who are unsteady on their feet. You will feel very high-up and exposed walking along row H.





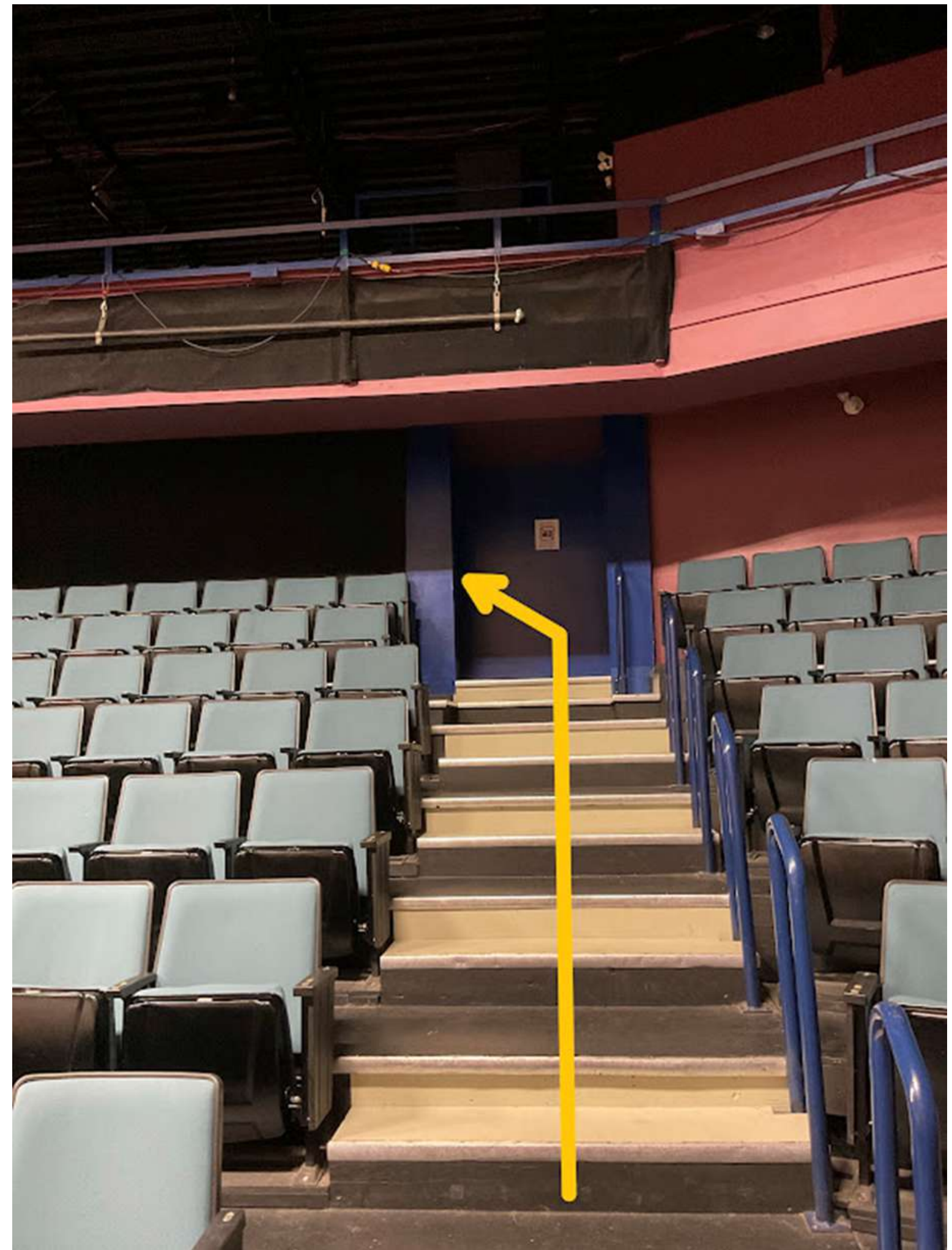
The balcony includes rows H and J.

Row J is farthest from the stage.

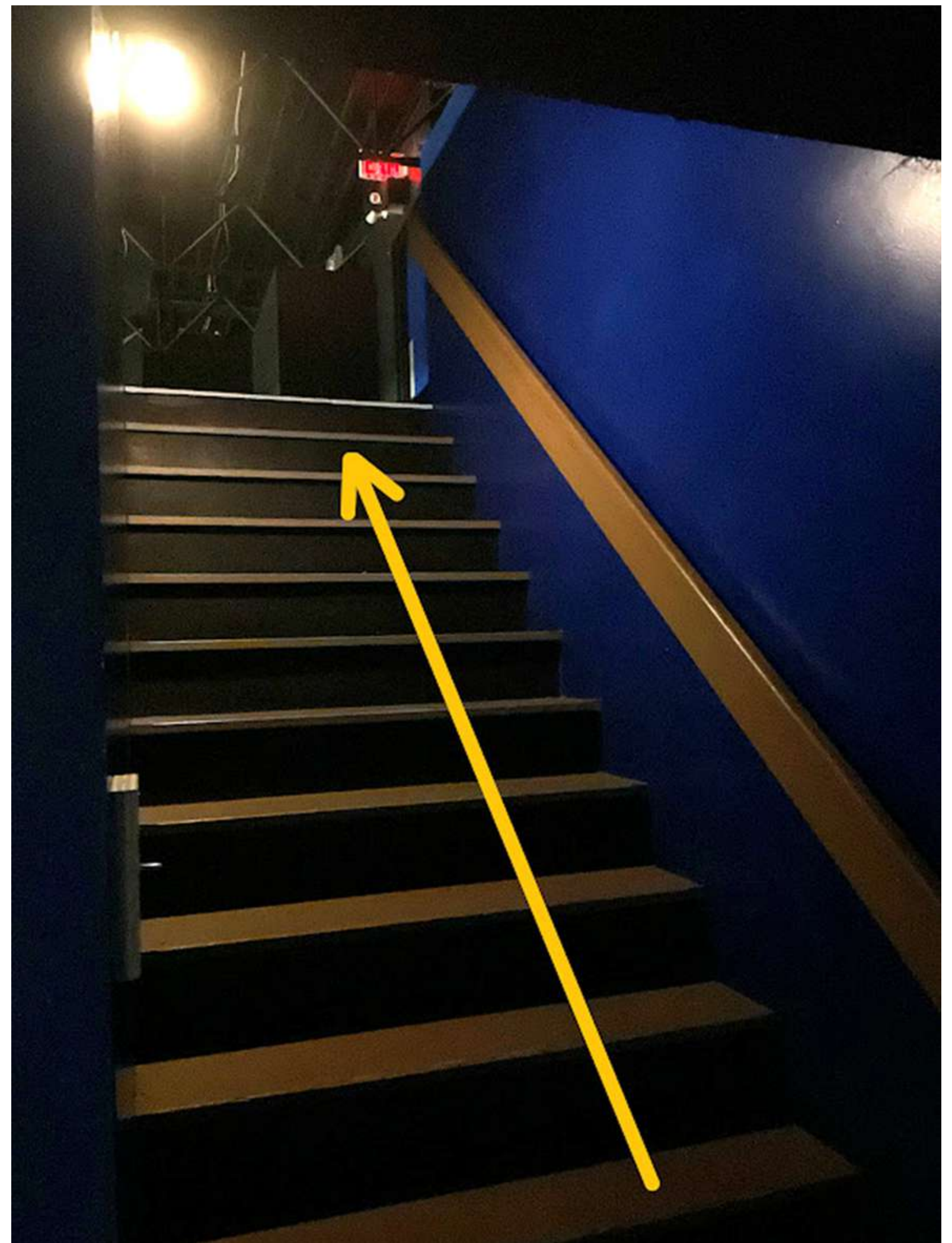
Row H is closest to the stage.

To get to the balcony, you need to first climb up the stairs in the main/lower audience section.

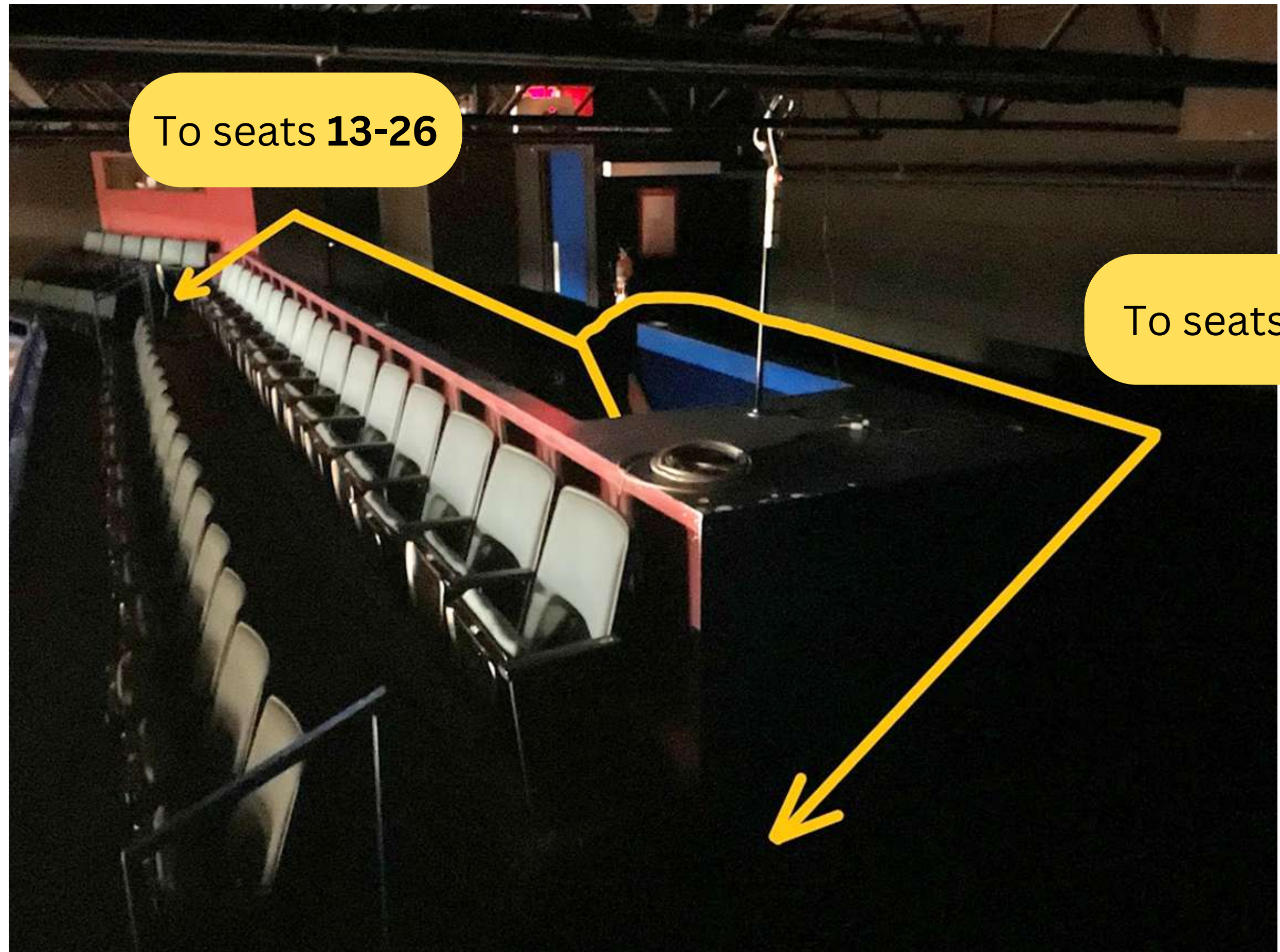
Please note that only the staircase that's closest to the entrance door leads upstairs.



Next, you will need to climb these stairs.



When you arrive upstairs, you can take one of two paths to get to your seat. They are indicated on the picture to the right.



To seats **13-26**

To seats **1-12**

Stage

The stage is raised off the floor. The furniture, decorations, paint colours and props on the stage will be different for each production.

Here is a picture of the stage when nothing is on it.



Here's what the stage looked like during our production of *Mum's The Word*.



Here's what the stage looked like during our production of *The Shoplifters*.



Here's what the stage looked like during our production of *Glory*.



Here's what the stage looked like during our production of *Becoming Dr. Ruth*.





BRITISH COLUMBIA
ARTS COUNCIL



BRITISH
COLUMBIA

Supported by the Province of British Columbia



PRINCE GEORGE
COMMUNITY FOUNDATION
all for our community.

